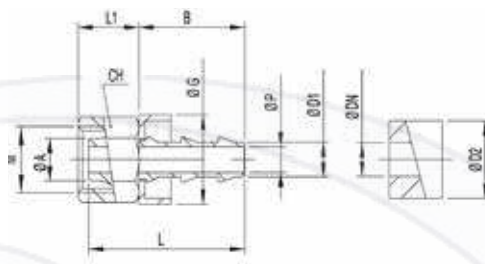


PUSH-LOCK RACORES

Utilizados con racores push-on para una presión máxima de trabajo de 16bar (250psi)

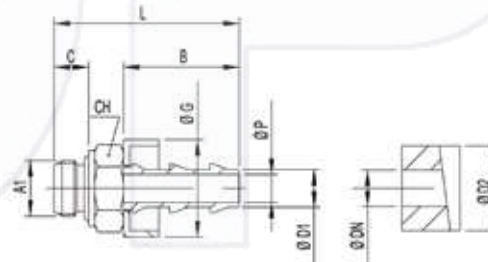
MANUFACTURING & MACHINE TOOLS

Automovil industria



Hembra Métrica

| Ø A | DN | Ø D1 | Ø D2 | CH | Ø G | L | B | L1 | Ø P | M | Cantidad de piezas | Código artículo | Notas |
|-----|-----|------|------|----|------|------|------|------|------|---------|--------------------|-----------------|-------|
| 6 | 1/4 | 6.3 | 13 | 12 | 16.7 | 32.5 | 20 | 11.5 | 4.8 | M10x1 | 10 | 5103630 | |
| 8 | 1/4 | 6.3 | 13 | 14 | 16.7 | 29.5 | 20 | 12.5 | 4.8 | M12x1 | 10 | 5103631 | |
| 10 | 1/4 | 6.3 | 13 | 19 | 16.7 | 30.5 | 24 | 14 | 4.8 | M16x1.5 | 10 | 5103632 | |
| 10 | 3/8 | 9.5 | 16 | 19 | 19.5 | 34.5 | 24 | 14 | 7.5 | M16x1.5 | 10 | 5103633 | |
| 14 | 3/8 | 9.5 | 16 | 24 | 19.5 | 36 | 28 | 15 | 7.5 | M20x1.5 | 10 | 5103634 | |
| 14 | 1/2 | 12.7 | 19 | 24 | 23.5 | 40 | 28 | 15 | 10 | M20x1.5 | 10 | 5103635 | |
| 18 | 1/2 | 12.7 | 19 | 30 | 23.5 | 40.5 | 36.5 | 17 | 10 | M24x1.5 | 10 | 5103636 | |
| 18 | 5/8 | 15.7 | 23 | 30 | 27.3 | 49 | 36.5 | 17 | 13.5 | M24x1.5 | 10 | 5103637 | |
| 22 | 3/4 | 18.8 | 27 | 36 | 30.8 | 57.5 | 43 | 17 | 16 | M30x1.5 | 10 | 5103638 | |



Macho BSP

| A1 | DN | Ø D1 | Ø D2 | CH | Ø G | L | B | C | Ø P | Cantidad de piezas | Código artículo | Notas |
|------|-----|------|------|----|------|------|------|----|------|--------------------|-----------------|-------|
| G1/8 | 1/4 | 6.3 | 13 | 13 | 16.7 | 32 | 20 | 6 | 4.8 | 10 | 5103640 | |
| G1/4 | 1/4 | 6.3 | 13 | 17 | 16.7 | 35.5 | 20 | 8 | 4.8 | 10 | 5103641 | |
| G1/4 | 3/8 | 9.5 | 16 | 17 | 19.5 | 39.5 | 24 | 8 | 7.5 | 10 | 5103642 | |
| G3/8 | 3/8 | 9.5 | 16 | 22 | 19.5 | 41 | 24 | 9 | 7.5 | 10 | 5103643 | |
| G3/8 | 1/2 | 12.7 | 19 | 22 | 23.5 | 45 | 28 | 9 | 10 | 10 | 5103644 | |
| G1/2 | 1/2 | 12.7 | 19 | 27 | 23.5 | 47 | 28 | 10 | 10 | 10 | 5103645 | |
| G1/2 | 5/8 | 15.7 | 23 | 27 | 27.3 | 55 | 36.5 | 10 | 13.5 | 10 | 5103646 | |
| G3/4 | 5/8 | 15.7 | 23 | 32 | 27.3 | 58.5 | 36.5 | 12 | 13.5 | 10 | 5103647 | |
| G3/4 | 3/4 | 18.8 | 27 | 32 | 30.8 | 65 | 43 | 12 | 16 | 10 | 5103648 | |